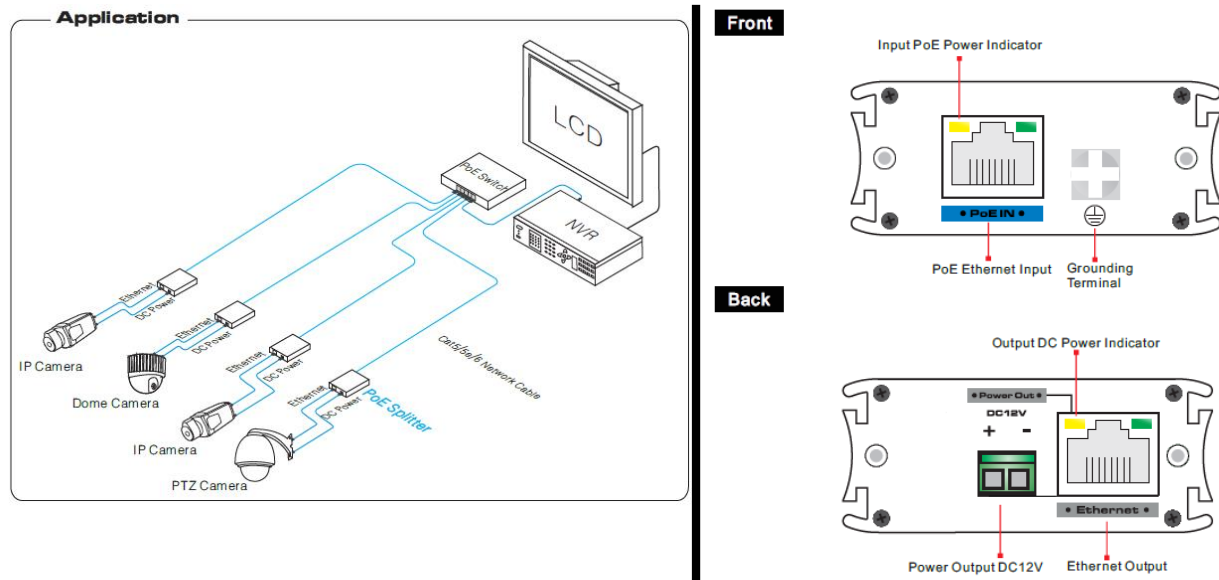


POESPL – 802.3af/at Power Over Ethernet Splitter

Thank you for your choice of Speco Technologies' **POESPL** IP camera accessory. This unit is designed and manufactured to provide an economical solution for powering Non-PoE IP cameras via a PoE signal. The sturdy construction of these units ensures a long & productive life.

DESCRIPTION

The **POESPL** is an Ethernet power device that will take a signal from a PoE switch and split the power and data into two separate signals. The splitter can handle up to 20W 802.3at PoE power.



INSTALLATION INSTRUCTIONS:

- 1) Turn off power to all units and sources. Installing the **POESPL** while power is live may damage the units.
- 2) Use an RJ45 network cable to connect the remote camera to the **POESPL** through the "Ethernet" port on the back of the unit.
- 3) Use an RJ45 network cable to connect your PoE Switch or injector with the **POESPL** "PoE In" port.
- 4) There is a two-cable 12VDC power output on the back of the unit. Use this to power the camera. You may need to use it in conjunction with a female DC plug to terminal block connector such as our (optional) DCPLGBLOCK.
- 5) Connect the power adapter to your PoE switch.
- 6) Confirm all cables are connected securely and properly and power on all units.

SPECIFICATIONS:

- Ports: 1 x RJ-45, 1 x 2-pin terminal block Output, 1 x RJ-45 Input
- Ethernet Speed: Up to 10/100MBPS
- PoE Standards: IEEE 802.3at/af
- PoE Power: 20W Max
- Input Power: PoE 36V-57V
- Output Power: DC12V
- Operating temperature: 32°F to 131°F
- Storage temperature: -40°F to 185°F
- Operating humidity: 0% to 95%RH
- Dimensions: 4.7" (W) x 2.4" (H) x 1.5" (L)
- Weight: 0.5 Lbs.
- Warranty: 2 Years (please visit Specotech.com for full warranty terms and conditions)

Speco Technologies is constantly developing and improving products.
We reserve the right to modify product design and specifications without notice and without incurring any obligation.