

The Signamax C-310 Series 24 port Gigabit 740W PoE+ switch includes an impressive set of features in a high-value package, making it ideal for IP video surveillance applications. With 740W PoE budget, the C-310 Series switch supports the full 30 watts of PoE+ on all 24 ports simultaneously to power the latest PTZ cameras. The C-310 Series includes a DHCP Server, Surveillance VLAN and even use ONVIF to automatically detect video cameras and NVRs and optimize VLAN and QoS settings.

The C-310 Series is built from the ground up for easy deployment and management without compromising any of the power and flexibility traditionally found in enterprise-class switches.



- Total PoE budget of 740W provides full 30W PoE+ concurrently on all 24 ports.
- Cost-effective, reliable, and secure Layer 2 switch
- Non-blocking switch with 56Gbps bandwidth
- Integrated mounting brackets for rack installation
- 8 dedicated QoS queues for converged voice, video, and data applications
- Static IP Routing & DHCP Server
- SFP uplink interfaces
- 5 year hardware warranty & support at no additional cost

C-310 Specifications

PORTS

24 10/100/1000 RJ-45 PoE+ Ports
4 SFP 100Mb/1G Ports

PERFORMANCE

8K MAC Addresses
Switching Capacity: 56Gbps
Forwarding Rate: 41.7 Mpps
128 MB DRAM
12 Mb Packet Buffer
16 MB Flash memory
Supports 10K Jumbo Frames
Wirespeed forwarding
IPv4/IPv6 Dual Protocol Stack

SECURITY

DDOS Protection
Port Isolation
Broadcast/Multicast/Unknown Storm Control
Up to 256 Access Control Lists (ACL) based on L2/L3/L4
Port Security
AAA (IEEE 802.1X RADIUS/TACACS+)
IP Source Guard
DHCP Snooping
Encrypt switch access with SSH and SSL

LAYER 3

Up to 56 Static routes
DHCP v4/v6 Client / DHCP Relay / DHCP Server

LAYER 2

SFP+ ports support IEEE 802.3u (100FX),
802.3z (1000SX/LX/LHX/ZX)
IEEE 802.3x Flow Control

Spanning Tree:

IEEE 802.1D Spanning Tree Protocol (STP),
IEEE 802.1w Rapid Spanning Tree Protocol (RSTP),
IEEE 802.1s Multiple Rapid Spanning Tree Protocol
Loopback Detection
BPDU Filter/Guard
Root Guard

Up to 4094 IEEE 802.1Q (802.3ac) VLANs:

Port-Based/MAC-Based/Protocol-Based(IEEE 802.1v)
Guest VLAN
Auto Voice/Surveillance VLAN
Dynamic VLAN Assignment
802.3ad Link Aggregation (static and LACP)

Multicast:

IGMP v1/v2/v3 snooping
IGMP Filtering/Throttling
IGMP Querier
IGMP Immediate leave
MLD Snooping
IEEE 802.1AB LLDP/LLDP-MED
IEEE 802.3az Energy Efficient Ethernet

MANAGEMENT

Web-based Graphical User Interface (GUI)
Industry-standard CLI (Telnet/SSH) with context-sensitive help
Comprehensive SNMP MIB support for standards based device management
Dual Configuration
RMON (groups 1,2,3 and 9)
NTP
SNMP v1/v2/v3

QoS

Rate Limiting (Ingress/Egress Port-Based)
Priority Queues Schedule (WRR/Strict Priority/Hybrid QoS)
Port-Based QoS
IPv4/IPv6 DSCP
DiffServ
Auto VOIP/Surveillance
8 HW Queues per port for 802.1p priority tagging

PoE

Support IEEE 802.3af/IEEE802.3at on each port
Dynamic Power Allocation
PoE Scheduling

PoE Budget: 740W

DIAGNOSTIC TOOLS

Cable Test
Digital Diagnostic Monitoring (DDM) on SFP Ports
Ping polling and traceroute for IPv4 and IPv6
Port Mirror (One to One, One to Many)
Event/Error Log/Syslog/SMTP Alerts

PHYSICAL CHARACTERISTICS

Dimensions: 17.25 x 12.46 x 1.74 in (44 x 31.65 x 4.4 cm)
Weight: 10.28 lb (4.665kg)
Heat Dissipation: 2606.8 Btu/H
MTBF: 71K hrs

ELECTRICAL CHARACTERISTICS

Power Supply AC Input: 100 - 240 V AC, 50/60 Hz
Max Power Consumption: 820W

ENVIRONMENTAL REQUIREMENTS

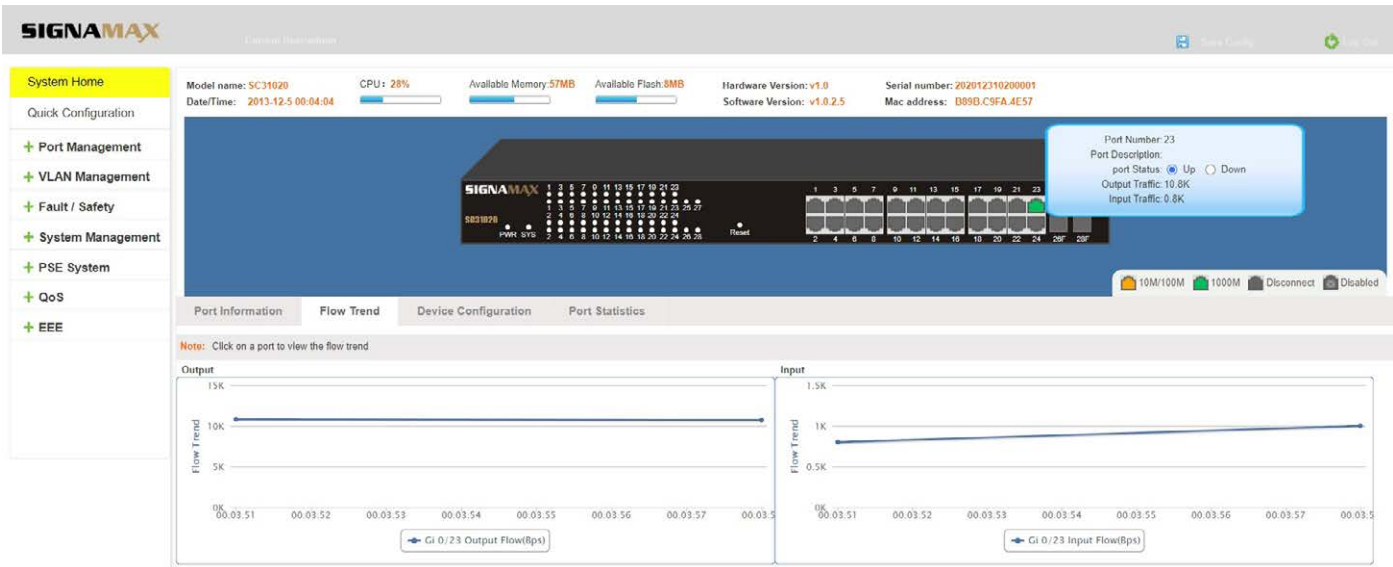
Operating Temperature: 0 to 104°F (0 to 40°C)
Storage Temperature: -40 to 158°F (-40 to 70°C)
Operating/Storage Humidity: 10 to 90% (non-condensing)

CERTIFICATIONS

Emissions: CE Mark: EN 55032, EN55035;
FCC Part 15 Class B
Immunity: IEC 61000-3-2/3

WARRANTY

Five Years (Including power supply)



Ordering Information & Accessories

ETHERNET SWITCHES

PART NO.	DESCRIPTION
SC31020	24 Port Gigabit 740W PoE+ Managed Switch with 4 SFP Ports

ACCESSORIES

Replacement Mounting Kits

AM30160	C-310 24 Port Switches Rack Mount Kit
---------	---------------------------------------

SFP MODULES

PART NO.	DESCRIPTION
065-80PDAC1M	10G SFP+ Direct Attach Cable, 1m
065-79SXMG	1000SX Multi-Mode SFP Module 850nm up to 550m
065-79LXMG	1000LX Single-Mode SFP module 1310nm up to 10km
065-79ZXMG	1000ZX Single-Mode SFP Module 1550nm up to 80km
065-73FXMM5MG	100FX / OC-3 / STM-1 Multi-Mode SFP Module 1300nm up to 5km
065-73FXSM20MG	100FX / OC-3 / STM-1 Single-Mode SFP Module 1300nm up to 20km
065-791000TTXMG	10/100/1000TX SFP Module 100m span

For a complete list of SFP Modules visit www.signamax.com.



SIGNAMAX®

999 NW 159th Drive, Miami, FL 33169
T: 305-944-7710/800 446 2377 E: sales@signamax.com

CONNECT WITH US



www.signamax.com

PSS-C310_C-1-21